

PRODUCT SHEET

The Micromart paving support pads with height regulation - fugue 2.2x16mm



Article:	Height:	In a box:
240-620-001-010	10 - 15 [mm]	20 pcs.
240-620-001-015	15 - 20 [mm]	20 pcs.
240-620-001-020	20 - 25 [mm]	20 pcs.
240-620-001-025	25 - 30 [mm]	20 pcs.
240-620-001-030	30 - 35 [mm]	20 pcs.

The adjustment range starting from 10 mm allows you to achieve what has never been possible before.

Height adjustment can be made by rotating one of the two elements forming the stand.

Non-invasive assembly allows you to build a terrace on any surface, and then carry out corrections, repairs and inspections of the terrace without the risk of damaging the elements forming the terrace and the surface on which it was constructed.

The plate is designed to support the terrace slab with a height of more than 16 mm and fugue of 2.2 mm.

The support pads are used for laying terrace tiles directly on waterproofing (thermo-weldable roofing paper, PVC foil, EPDM, etc.).

BENEFITS:

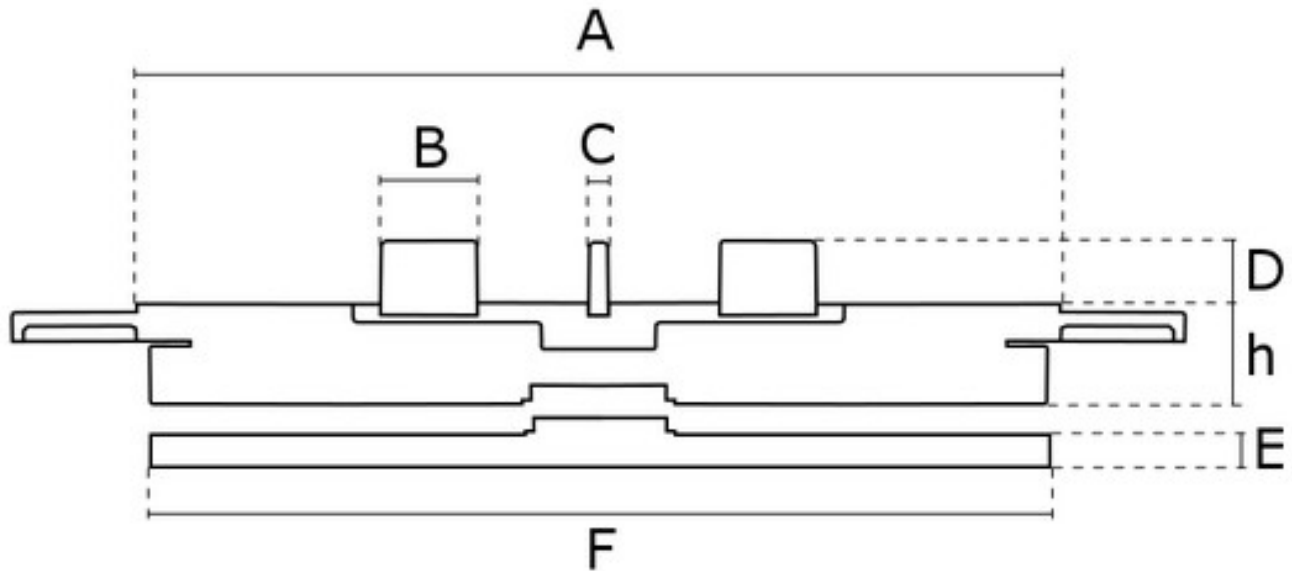
- **resistance** to harmful weather conditions, **including acid rain and UV radiation**
- easy and fast way of laying the terrace surface.
- easy access to installations located under the surface of the terrace.
- thanks to the smooth height adjustment, support pads allow to level the uneven surface.
- the use of the slope regulators allows level the terrace surface.
- increase of thermal insulation caused by the air space between the top layer and the remaining layers of the flat roof.
- it is possible to use a correction and sound absorbing pad for additional amortization between the plate and the support pads.
- to adjust the spacing between the plates ("fugue"), the top of the stand (plate) can be removed and a (3 mm, 4 mm or 5 mm) can be placed.

One support pads withstands a pressure of **400 kg**, assuming a 50% reduction in value in order to maintain safety standards.

The product is made of PP T 20%.

If there is a risk of uneven pressing, it is recommended to use sound absorbing pads (accessories for support pads).

Technical drawing



*Values in mm.