

PRODUCT SHEET

Standard 240 roof drain for bituminous membranes

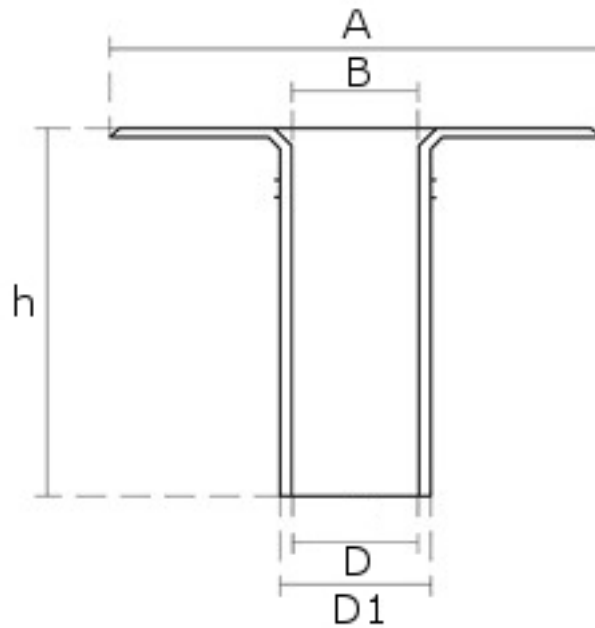


Article:	Diameter:	In a box:
030-040-240-040	30 [mm]	25 pcs.
030-050-240-060	49 [mm]	25 pcs.
030-040-240-075	67 [mm]	25 pcs.
030-050-240-080	72 [mm]	25 pcs.
030-040-240-090	81 [mm]	25 pcs.
030-050-240-100	92 [mm]	25 pcs.
030-050-240-110	94 [mm]	18 pcs.
030-051-240-125	113 [mm]	18 pcs.
030-050-240-125	116 [mm]	10 pcs.
030-050-240-140	129 [mm]	10 pcs.
030-050-240-150	137 [mm]	10 pcs.
030-050-240-160	146 [mm]	10 pcs.
030-050-240-200	185 [mm]	8 pcs.

"Standard 240" roof drains are intended for drainage of flat roof covered with thermoplastic bitumen hydro-insulating membrane. Made of special material that binds well with bitumen membranes, they are characterised by high resistance to UV radiation, ozone, and other atmospheric and chemical agents

Due to refining additives, the roof drains maintain their flexibility and dimensional stability in a wide temperature range and provide short-time resistance to welding, enabling you to weld them directly to bitumen membrane. The sealing flange combined with a downpipe provides a tight roof drainage system.

Technical drawing



Articles:	A	B	D	D1	h
030-040-240-040	235	40	27	30	240
030-040-240-060	240	59	47	49	240
030-040-240-075	320	75	65	67	240
030-040-240-080	320	80	68	72	240
030-040-240-090	320	87	78	81	240
030-050-240-100	320	100	88	92	240
030-050-240-110	320	104	91	94	240
030-051-240-125	320	108	110	113	240
030-050-240-125	320	113	113	116	240
030-050-240-140	380	135	125	129	240
030-050-240-150	385	145	135	137	240
030-050-240-160	385	154	135	146	240
030-050-240-200	440	193	184	185	240

* Values in mm.

Flow capacity l/s

Diameter:	H* 1cm:	H* 10cm:
30 [mm]	0,2 l/s	0,6 l/s
49 [mm]	0,6 l/s	2,0 l/s
67 [mm]	1,2 l/s	3,7 l/s
72 [mm]	1,3 l/s	4,2 l/s
81 [mm]	1,7 l/s	5,2 l/s
92 [mm]	2,0 l/s	6,4 l/s
94 [mm]	2,5 l/s	7,9 l/s
113 [mm]	3,4 l/s	10,8 l/s
116 [mm]	3,4 l/s	10,0 l/s
129 [mm]	3,4 l/s	10,0 l/s
137 [mm]	5,1 l/s	16,3 l/s
146 [mm]	5,4 l/s	18,7 l/s
185 [mm]	9,5 l/s	30,1 l/s

* H – Height of water column