

PRODUCT SHEET

Modular paving fixed height support pads 10mm



Article:

i61

Height:

10 [mm]

Diameter:

150 [mm]

In a box:

250 pcs.

These fixed height (10 mm) supports can be placed directly on waterproofing (tar roofing, PCV foil, EPDM etc.) and are perfect for paving terraces.

They are also used to build wooden terraces without the need to mechanically attach the joists to the ground.

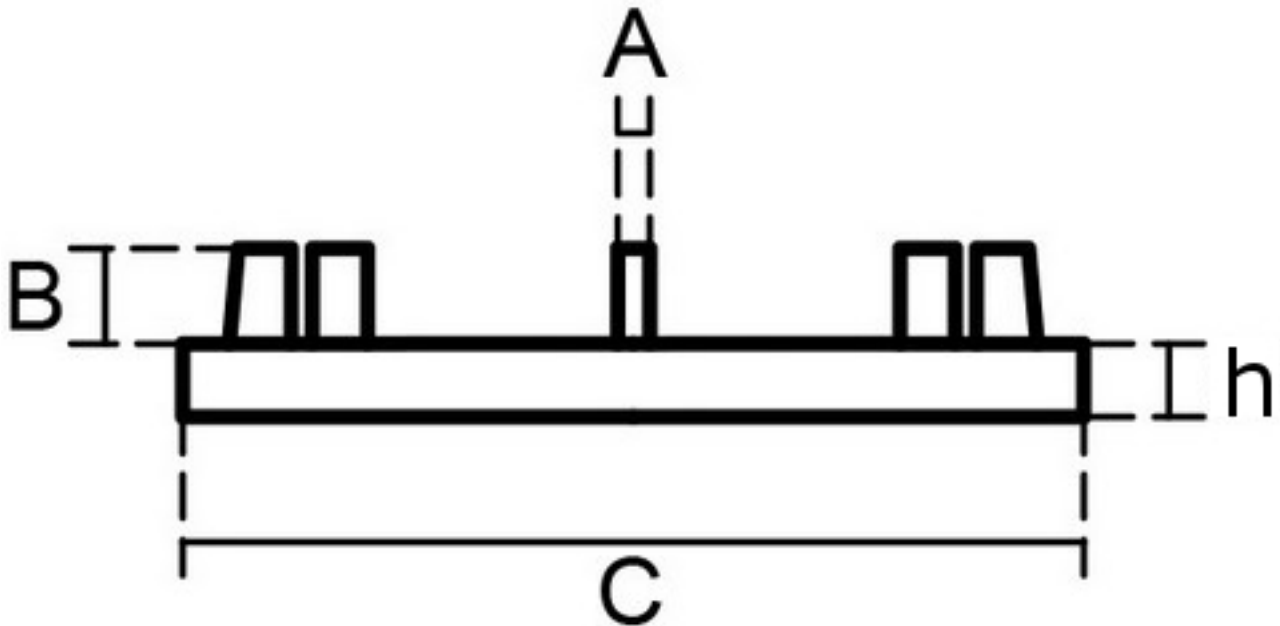
BENEFITS:

- fast and simple solution to construct aesthetic floor.
- unique system prevents slabs movement caused by changing temperatures or walking on raised floor.
- easy access to any installation hidden under the floor.
- high thermal isolation provided by space between raised surface and foundation.
- supports are modular and it's possible to stack them up to 5 pieces to reduce differences in foundation height.
- rubber shim 2,5 mm (**article 240-910-150-003**) is good addition as an amortization between slabs and supports.

It is NOT possible to attach any modular fixed height support pads to regulated support pedestals.

One support pad has weight tolerance **1000** KG. This value is already reduced by 50% for safety reasons.

Technical drawing



Articles:	A - lug width	B	C	h
i61	3	8	150	10

*Values in mm.

Price for single unit.